



Royal Palm Literary Awards  
RPLAentries@floridawriters.net

**2012 Royal Palm Literary Awards**  
**Competition**  
**Florida Writers**  
**Association**  
*NonFiction Entry Package*

Dear FWA Member,

Welcome to the 2012 Royal Palm Literary Awards competition! The RPLA is unique among writing competitions in that it is not only about recognizing winners but also about providing valuable feedback to all entrants. No other competition we know guarantees that at least three judges will read and thoroughly comment on the entries that make the finals.

This year, RPLA will judge 29 categories, including book-length nonfiction (6 genres), short nonfiction (2 genres), poetry, short fiction (2 genres), juvenile fiction (3 genres), adult book-length fiction (12 genres), Plays, and a general category for any work that does not fit into any of the others. We solicit and judge separately both Published and Unpublished submissions in each category, there are 158 possible awards, including the special recognition given for Published Book of the Year and Unpublished Book of the Year.

Over the years, RPLA has remained steadfast in its philosophy, specified in the RPLA Mission Statement: *The Royal Palm Literary Awards competition is a service of the Florida Writers Association established to recognize excellence in members' published and unpublished works while providing blind, objective, and constructive written assessments for all entrants.*

The RPLA remains fluid regarding member needs, and every year we improve and refine our processes and requirements. This year, for instance, due to popular demand we've added a *Play* category for Screenplays, Stage Plays, and Teleplays. All entries this year will be in PDF format (See FAQs). This is to eliminate the changes in the manuscript format that occur when different types of files are opened by various software programs. It will also allow the judges to use e-readers to read the entries. This is especially helpful to them for judging full-length manuscripts.

The Entry Package is divided into segments, which should make it easy for you to find everything you need to know. (The PDF files in the Entry Package are searchable.) If after reading this packet (including the FAQs) you still have questions, feel free to contact us at [RPLAquestions@floridawriters.net](mailto:RPLAquestions@floridawriters.net)

Best of luck, everyone!

J. W. Thompson  
2012 RPLA Chairperson  
[RPLAentry@FloridaWriters.net](mailto:RPLAentry@FloridaWriters.net)

# Index

**ELIGIBILITY REQUIREMENTS -----Page 3**

**INDIVIDUAL CATEGORY REQUIREMENTS -----Page 5**

**FORMATTING -----Page 7**

**FAQs -----Page 8**

**PDF Conversion -----Page 14**

**Information Page -----Page 23**

## **ELIGIBILITY REQUIREMENTS FOR ALL CATEGORIES, ALL ENTRIES**

1. You must be a Florida Writers Association (FWA) member with dues paid at least through October 31, 2012 in order to be eligible for an award. If your membership expires earlier than that time, purchasing a renewal will extend your membership for twelve full months.
2. Neither the Royal Palm Literary Awards competition Committee Chairperson nor any chairperson assistants may enter.
3. For entries with multiple authors, at least one author must be a member of FWA. If entry wins an award it will be presented to the FWA member and have their name on it. We encourage multiple authors to be members but for the purpose of the awards, they must both be members as stated above in Number One at the time of submission to have their name engraved on the award.
4. Your entry must be your original work. All authors involved in the writing must be named on the Cover Sheet. Names should be listed as you wish them to appear on an award, should you win.
5. You may submit multiple entries. You may enter both Published and Unpublished works. Published includes traditionally published works in paper format as well as works published electronically including POD [Print on Demand], magazines, newsprint, papers, or by one of the booksellers such as Amazon, Barnes and Noble, Borders, Sony, or Powell's. Within each genre-category, Published entries will be judged separately from Unpublished entries.
6. Published entries must display publication dates of 2010, 2011, or 2012 on the publication's copyright page.
7. Any work that has received a Royal Palm Literary Award [First, Second, or Third Place] in prior years is not eligible for entry again. If your work has not won an award, you may reenter it, whether or not you've done additional editing. If your work was named a Finalist, it may be

reentered. If your entry won in the Unpublished category and is now published it may not be entered into the Published category this year.

8. Any entry that does not fit into any other established category may be entered into the General category.
9. Any entry that does not fully comply with the specifications of this Royal Palm Literary Awards Entry Packet will be disqualified, and the entrant notified.
10. Entries entered into the wrong category (Romance or screenplays, etc. in the general category) will be disqualified and the entrant notified. Do not enter the general category because you think it will have fewer entries than your genre---it may have more.
11. Awards are given out at the RPLA Banquet at the Conference. If you are a finalist, please plan to attend. If you cannot attend, please arrange for someone to pick up the award.

# NonFiction

## INDIVIDUAL CATEGORY REQUIREMENTS

1. Information Page: The completed Information Page must be emailed as part of the submission package. All requested information on this page must be provided by the entrant. (For submissions with more than one author, the biography may be joint or individual, allowing a maximum of 30 words per author.) The Information Page should be sent as a PDF attachment [a .pdf, file] and be named with part or all of your title followed by the capitalized initials IP. For example, an Information Page for the novel Blood on the Sun could be called bloodsunIP.pdf.
2. First 30 Pages: In the same email, the first thirty pages of your manuscript (following the formatting requirements) must be sent as bloodsun30P.pdf. Not required for essays or short creative nonfiction.
3. Full Manuscript: In the same email, your entire manuscript (following the formatting requirements) must be sent as bloodsunFull.pdf.
4. Synopsis: In the same email, your synopsis (following the formatting requirements) must be sent as bloodsunSyn.pdf. A synopsis is not required for essays or short creative nonfiction entries.
5. Entry Fees: Before an uploaded entry can be processed, RPLA must receive notification of payment from FWA's shopping cart. This is an automatically-generated notification that happens for each entry payment. Or notification from Chrissy Jackson for entries paid by check and mailed.

Fees are tiered:

- a. \$30 for entries from 12:00:01 a.m. February 15, 2012 through 11:59:59 p.m. March 31, 2012,
  - b. \$40 for entries received from 12:00:01 a.m. April 15, 2012 through 11:59:59 p.m. May 31, 2012,
  - c. \$60 for each entries received from 12:00:01 a.m. June 1, 2012 through 11:59:59 p.m. June 15, 2012.
6. Entrant will receive email confirmation when all eligibility requirements have been verified, payment has been made, and the submission is officially entered into Royal Palm Literary Award Competition.

## BOOK-LENGTH NONFICTION

**Autobiography/Memoir:** An autobiography is a factual prose narrative, generally in chronological order, presenting a broad view of one's life. A memoir can be more subjective, episodic, stream-of-consciousness, lyrical, or literary. Minimum 35,000 words. (Example: *Angela's Ashes* by Frank McCourt) Authors, please substitute—Name Withheld for your actual names, but if you feel that doing so would disrupt your text, simply substitute—John Doe or —Jane Doe.

**Biography:** Account of an individual's life written by another person. Minimum 45,000 words. (Example: *American Lion* by Jon Meacham)

**Educational/Informational:** Self-help, instructional, or —how-to. Minimum 40,000 words.

**History:** Describes a particular event in time, customs or styles in the past, or the people or culture of a particular era. Minimum 40,000 words. (Example: *The Path Between the Seas* by David McCullough)

**Humor/Satire:** Focuses on humor or satire, with characters, settings, and subjects based on real events. Minimum 40,000 words. (Examples: works by Dave Barry and Erma Bombeck) [Note: There is also a fiction Humor/Satire category, so be sure your entry forms and Information Page specify if your entry is fiction or nonfiction.]

**Travel:** Describes a particular locale or various locales as it entertains or informs the reader. May be based on the author's own experiences in story form or written as a travel guide. Minimum 40,000 words. (Examples: works by Bill Bryson and Peter Mayle)

## SHORT NONFICTION

**Creative Nonfiction:** A snapshot of an event in a person's life that may take a variety of forms, including anecdote, slice of life, or personal essay. Maximum 5,000 words. (Example: works by Garrison Keillor) A synopsis is not required for essays or short creative nonfiction entries.

**Essay:** Factual writing that presents, explains, argues, or describes ideas on a single topic. Maximum 5,000 words. (Example: *The —Best American Essays* series) A synopsis is not required for essays or short creative nonfiction entries.

## FORMATTING

1. The page setup for your upload should be set for 8.5-inch x 11-inch pages.
2. Margins 1 or 1.5 inches on all four sides.
3. Black text, 12-point Times New Roman typeface only.
4. Begin chapters approximately one-third from the top of the electronic page. Each chapter should begin on a new page.
5. Double-space text and insert no extra line spaces between paragraphs. (See sample pages, below.) Poetry may be either single-spaced or double-spaced.
6. Left justify (no full justification).
7. Indent the first line of each paragraph .3 to .5 inches, as shown on the following sample entry.
8. Place six asterisks centered \*\*\*\*\* between each scene within a chapter in place of the empty line break. No blank lines, please. Saved in PDF format.
9. Do not include your or any co-author's name on any page of the full manuscript , the first 30-page or synopsis submission. For Autobiography/Memoir, substitute Name Withheld, John Doe or Jane Doe for your name.
10. Due to the judging being blind, all Published submissions must be in electronic format with the author name removed, Royal Palm Literary Award Competition does not permit any printed books to be physically submitted for the judging process.

Questions? See FAQs or contact us at [RPLAquestions@FloridaWriters.net](mailto:RPLAquestions@FloridaWriters.net)

## FAQs

### 1. What is a PDF file and why is it the only format the RPLA accepts?

PDF stands for Portable Document File. PDF is a formal open standard known as ISO 32000. Maintained by the International Organization for Standardization. Because last year many of the judges had problems opening some of the submitted files due to different computer operating systems or older software we are standardizing the submissions. PDF files are viewable and printable on virtually any platform, including Windows®, Mac OS, and mobile platforms such as Android™. The use of PDF files will also make it easier for the judges to use their e-reader to read full length submission instead of having to read them on their computer. Some of the software they used to open the various types of files changed the file's formatting- using the PDF format will eliminate this.

### 2. How do I change my submission to a PDF file?

There are several methods available. If you have a new version of MS Word it can be done in the "save as" window. Instead of saving it as a .doc or .docx the drop down menu will give you the option to save it as a PDF. If your version of Word does not have that option you can download a free program called Open Office at <http://www.openoffice.org/> it will open your file and you can save it as a pdf---by going to file then clicking on export as a pdf.

### 3. Who are the RPLA judges and what are their qualifications?

The judges are industry experts from a number of fields. In 2010, the roster included current or retired teachers, librarians, professional editors, college professors, published authors, former RPLA winners, journalists, and leaders of writing and reading groups. A good percentage had advanced degrees. Most were Floridians, but others hailed from other states, as well. All judges are required to complete a questionnaire, which allows RPLA to keep their qualifications on record. The roster for 2012 will be selected from the 2011 judge-base, with new judges added by recommendation and approved by the RPLA Committee.

### 4. Why are the packaging and formatting requirements for an RPLA entry so strict?

Okay, it only *seems* like we're trying to torture you! Seriously, RPLA seeks to recognize excellence of the writing that you submit, which means comparing apples to apples. If two entries are formatted differently, the format—quite apart from the content—could influence a reader's perception of the work. Requiring a consistent entry process and consistent formatting places all entries on equal footing. Fairness isn't always convenient! It's worth noting that many agents and publishers have similar or even stricter requirements.

### 5. What steps are taken to ensure that my entry is judged blind?

First, your name is not on your manuscript, synopsis, or anything the judges see. RPLA also instructs judges to inform the committee chair if they know or suspect the identity of the author of any entry. In such an instance, the judge is instructed to return the entry to the committee chair so that RPLA can send the entry to another judge.

### 6. I understand why judges cannot know my name, but why can't I know theirs?

RPLA believes that discretion and confidentiality are the foundation of professionalism, and we work to keep our roster of judges a closely guarded secret. Keeping the entrant-judge relationship blind in both directions is the best way to maintain objectivity, particularly with those judges who have been recruited from within the organization. Judges are not permitted to not talk to anyone about any entry (unless they have a specific, technical question for the committee chair), and they must dispose of all submissions, by shredding if possible. They may not list their judge-role on their

resumes, use RPLA in their own promotional materials, or announce it on their websites. Because of this anonymity, being a judge for RPLA is a labor of love, and our judges are truly unsung heroes.

**7. I heard my entry is being judged, not critiqued. What's the difference?**

—Critiquing means that the person doing the evaluating decides what's important. —Judging means that the contest decides what's important, and the judge scores against those standards. Each rubric lists specific criteria that must be taken into account when an entry is judged.

**8. Some of the genre-categories, such as Autobiography/Memoir, have slashes in the category names. What does that mean?**

A number of categories are related but distinct, and RPLA sometimes defines them separately but judges them together. Autobiography/Memoir is one such instance; Horror/Dark Fantasy and Thriller/Suspense are others. If your Suspense novel wins an award, your award will say Thriller/Suspense since your work competed with entries in both genres.

**9. You ask for a synopsis with book-length entries. Is a synopsis the same thing as a book-jacket blurb?**

No, a synopsis has a different purpose than a book-jacket blurb. While the book jacket's main purpose is to hook the reader, the synopsis's main purpose is to summarize the book. Your RPLA synopsis should describe all of your book's major plot points. This means—yes!—you must give away the ending. Focus on the essential parts of your book, and present the material in the same order as it occurs in the book. Limit your RPLA synopsis to two double-spaced pages and center the heading: —Synopsis of [title of book]

**10. When you say send the first thirty pages for my book-length entry, what does that mean? Do I include fore-matter, such as the table of contents, or just start with Chapter 1?**

It's up to you. Fore-matter, such as a table of contents, preface, or introduction, may be excluded from the partial manuscript. If any of these are included, however, they must be counted as part of the thirty pages. Do include fore-matter with the full manuscript, however, except for author biographies or any information that will identify the author. (For biographical information, RPLA relies on the Information Page, which contains the brief bio.) Keep in mind that the included synopsis, if it applies to your genre-category, is NOT counted as part of the first thirty pages.

**11. One of the chapters in my book stands well on its own. May I enter the chapter *and* the book?**

Sorry, no. The rule is that no entry may be submitted twice in the same year, which means that if a poem, short story, or chapter of a longer work can stand alone, you must choose whether to submit the longer work or the shorter one. Similarly, if your entry wins an award (First Place, Second Place, or Third Place Mention), neither the shorter nor the longer piece may be entered in following years. If your entry does not win an award, either the shorter or the longer work may be resubmitted in following years, but not both in the same year.

**12. I use a pen name. May I submit my entry under that name?**

Yes and no. The entry form has two fields for your name: one for your contact name and one for your —author name. In the Contact Name field, you must enter your name as it appears in the FWA roster. This year there is a space for you to use any name you want to appear on the entry form. If you

wish to use a pen name or nickname, you may so designate in the –Author field of the form (e.g., –Joe Smith, writing under the pen name of Sue Morgan ), but you must still use your –official name in the Contact field.

**13. My name appears throughout my Autobiography. How do I keep from revealing my identity?**

You have some choices here. Some authors substitute –Name Withheld for their actual names, but if you feel that doing so would disrupt your text, simply substitute –John Doe or –Jane Doe. This is a fairly easy Copy/Paste function on the computer, and the judges will understand the substitution.

**14. These guidelines specify not to use double-double spacing between paragraphs. What if I want to show a break in time or place?**

If you want to show a break in time or place, you must use a line with six asterisks centered (\*\*\*\*\*). What you don't want to do is double-double space between *every* paragraph.

**15. When you say “Published,” what does that mean? Does the category include self-published work? Work published online?**

With so many kinds of publishers in the market, it is getting increasingly difficult to distinguish one –kind of publisher from another: what may be considered –self-publishing to one author may be –alternative publishing to another. For RPLA's purposes, public dissemination is considered –publishing, so if the work was traditionally published, self-published, published online, or anything in between, the work is considered as Published for RPLA purposes.

**16. If my book, story, or article was published online, I can't send a copy of the publication. How do I send RPLA proof of its publication?**

A screen shot and a website URL is sufficient for RPLA to verify publication.

**17. What if my book, story, or article is currently unpublished but scheduled to be published before the RPLA entry deadline? Do I enter it as Published or Unpublished?**

Interesting question! Your entry must reflect its publication status at the time of submission to RPLA. For instance, if you submit your entry in April but expect it to be published in July, you must enter it in an Unpublished category. If you would prefer to enter your work as Published, you must wait until you have a published copy in hand (or, in the case of online publishing, until it is available for public access) before submitting it to RPLA as a Published entry. If the status of your entry changes during the RPLA entry window, you may not change its designation; for instance, if you enter a work as Unpublished in April and it is published in June, it will be judged as Unpublished, and any awards will be designated accordingly.

**18. May I use my ARC (Advanced Reading Copy) as proof of publication?**

Unfortunately, no. Because the ARC may predate actual publication, the proof of publication must derive from the actual published copy.

**19. What does RPLA do with my bio and logline (pitch)?**

Bios and loglines of winning entries will be published in written announcements available to

members, agents, and publishers after the Banquet; posted on the FWA website; and used in FWA promotions as FWA deems appropriate (good PR for everyone). The loglines and bios of first-place winners will also be read at the Awards Banquet.

**20. I'd like to enter my work in another competition. May I?**

Absolutely! You may be entered in, or plan to be entered in, as many writing competitions as you wish when you enter the RPLA.

**21. Why can't I send illustrations with the manuscript of my Children's picture book?**

FWA is an organization for writers, and the RPLA judges consider entries based on the writing. One element of writing for Children's picture books, however, is how well the text suggests illustrations, and that element is considered in the scores and comments.

**22. For Published book-length entries, do you want 30 manuscript pages for the submission, or the equivalent of 30 printed (galley) pages?**

Manuscript pages. This requirement helps to ensure that judges compare apples to apples with respect to both length and format.

**23. Why do Published works have to be submitted double-spaced? If I remove my name, why can't I submit galley copies?**

Galley copies have a different format than manuscript pages, and the different leading, typeface, and margins of your galley copy cannot help but impact the judges' conscious or unconscious perception. It is by comparing apples to apples—manuscript to manuscript—that judges can best compare the entries for the competition.

**24. My publisher made some edits to my book after I completed the manuscript. It will take days to go through the published book and update the manuscript. Why can't I use the galleys?**

If your work is competing as a Published work, the manuscript must match the final published version of the work word for word. We apologize for any inconvenience you may experience when you check your manuscript, but it is essential for all entries to compete on a level playing field, so any variation from the prescribed manuscript format will disqualify the entry.

**25. My publisher made some changes I don't like. May I use the version I prefer?**

Sorry, no. If your entry is submitted as Published, it must be judged as it was published, with the wording identical to the wording of the final published document—in manuscript form, of course.

**26. My book could fit more than one genre. May I enter it more than once if I pay the extra entry fees?**

Each entry may be entered in only one genre-category per year.

**27. My entry is a “blended genre” book and fits the descriptions of several genre-categories. I’d like to enter it in the category with the fewest entries. Can you tell me which category that is?**

No, we cannot, and it would be a disservice to you if we did. While it may seem an advantage to compete in the category with the fewest entries, your entry will fare best if it is entered in its most appropriate genre- category. In fact, one of the factors that judges are instructed to consider in their scores is how well the entry fits the genre-category.

**28. Why don’t you have a category that better fits my work?**

The RPLA categories evolve every year. This year, RPLA has 26 such categories (52, counting Published and Unpublished separately), which combined with the two Book of the Year awards, allows for a possible

158 awards. We added a general catch-all category that you can place your work if you feel it fits none of our other genres. See the general category to see examples of such works and genres. We add categories when there is significant demand for them, and we eliminate categories when they no longer receive a sufficient number of entries. Needless to say, we generally add more than we take away. The current categories do not cover every possible instance, but rather the areas of greatest interest to FWA members. If only one member wishes a category to be added, it would be impractical to do so. However, if several members want to include this category, the RPLA committee is pleased to consider the request.

**29. Last year, my submission did not win, but I made some edits based on comments in the rubrics. May I enter the work again this year?**

Absolutely! That’s one of the main purposes of the RPLA: to help FWA members become better, more publishable writers. If your entry did not win an award (First Place, Second Place, or Third Place), you may enter it again, whether or not you’ve made any changes. You’re also welcome to change genre-categories if you feel that it’s appropriate. If your work was a Finalist, but not an award winner, you are free to reenter it.

**30. My friend just heard that she made the finals. I turned my manuscript in before she did. Does that mean I did *not* make the finals?**

No. Judges are requested to turn around the entries efficiently, but our judges have different judge-loads, may read faster or slower than others, or may have unexpected illness or surgery that may delay the scoring of a particular entry. All of which means that while judges make every effort to score a submission promptly, sometimes there are delays. Please note also that in 2010, RPLA had more than 350 entries, and many more entries are expected for 2011, so please be patient!

**31. If I prefer to be notified of Finalist status by phone or mail, rather than email, may I make that request?**

Unfortunately, no. Email is the standard method by which RPLA notifies entrants of the Finalist status of an entry, and it is your responsibility to check your email inboxes regularly to ensure that you meet all specified deadlines and are aware of any other important notices. Only in extreme circumstances may other arrangements may be made, and only then with the permission of and sufficient notice to RPLA.

**32. When I find out I've made the finals, may I tell my friends? May I advertise it on my website?**

Talk, brag, and leap into the air! If you're an RPLA Finalist, celebrate and enjoy! We ask that you do not mention the title of your work until after the judging is complete.

33. Still have questions, feel free to contact us at [RPLAquestions@floridawriters.net](mailto:RPLAquestions@floridawriters.net)

# PDF

## Portable Document File

There are a few different ways to convert a file to a PDF file. The first part will deal with the later versions of MS Word. If your version of Word does not have the options that appear in the photos then go to option two---using Open Office. Open Office is a free download at this site-- <http://www.openoffice.org>

Open Office is a free software to download and easy to use. You can open your documents in the program and convert them to PDF by following the instructions below.

# Using MS Word 2010

The screenshot shows the Microsoft Word 2010 interface. The title bar indicates the document is in Compatibility Mode and that product activation has failed. The ribbon is set to the 'File' tab, showing options like Save, Save As, Open, and Close. The 'Info' section on the left contains a 'Save As' button, which is highlighted by a black line that extends to a small preview window of the document. The text 'click here' is positioned next to this preview window. The main area displays three informational panels: 'Product Activation Required', 'Compatibility Mode', and 'Permissions'. The 'Product Activation Required' panel states that Microsoft Office Professional Plus 2010 needs a valid license. The 'Compatibility Mode' panel explains that some features are disabled to prevent issues with older Office versions. The 'Permissions' panel indicates that anyone can open, copy, and change the document. On the right, the 'Properties' section provides document statistics: Size (65.8KB), Pages (59), Words (18510), Total Editing Time (9 Minutes), Title (Add a title), Tags (Add a tag), and Comments (Add comments). Below this, the 'Related Dates' section shows the document was last modified and created on 1/19/2009 at 8:29 AM, and has never been printed.

1 [Compatibility Mode] - Microsoft Word (Product Activation Failed)

File Home Insert Page Layout References Mailings Review View

Save  
Save As  
Open  
Close

Info

Recent

New

Print

Save & Send

Help

Options  
Exit

Information about 1  
C:\Users\jim\Documents\1.docx

**Product Activation Required**  
Microsoft Office Professional Plus 2010 requires a valid product license. Activate your product key now to obtain a valid product license.

Activate Product

**Compatibility Mode**  
Some new features are disabled to prevent problems when working with previous versions of Office. Converting this file will enable these features, but may result in layout changes.

Convert

**Permissions**  
Anyone can open, copy, and change any part of this document.

Protect

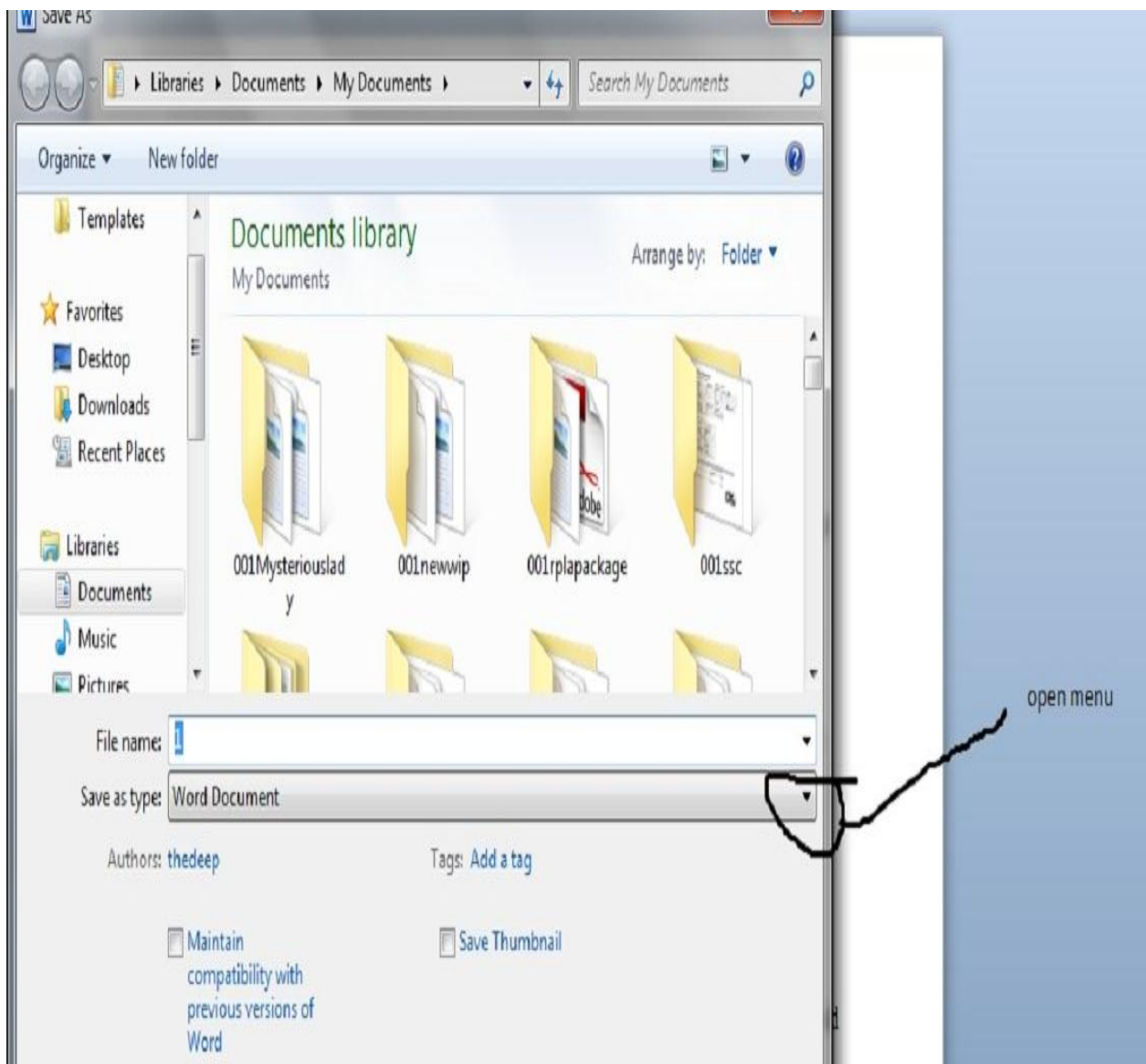
click here

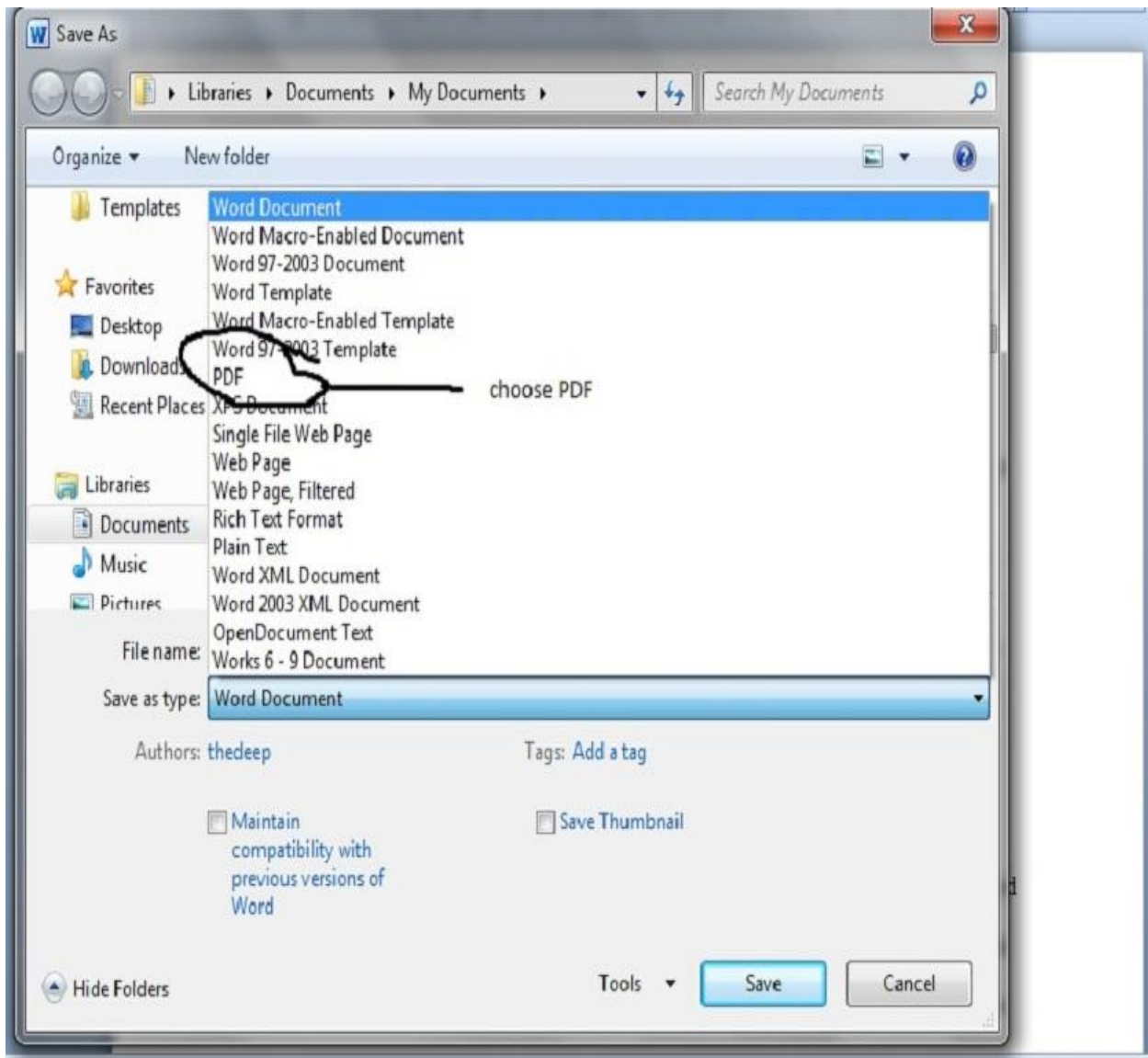
Properties

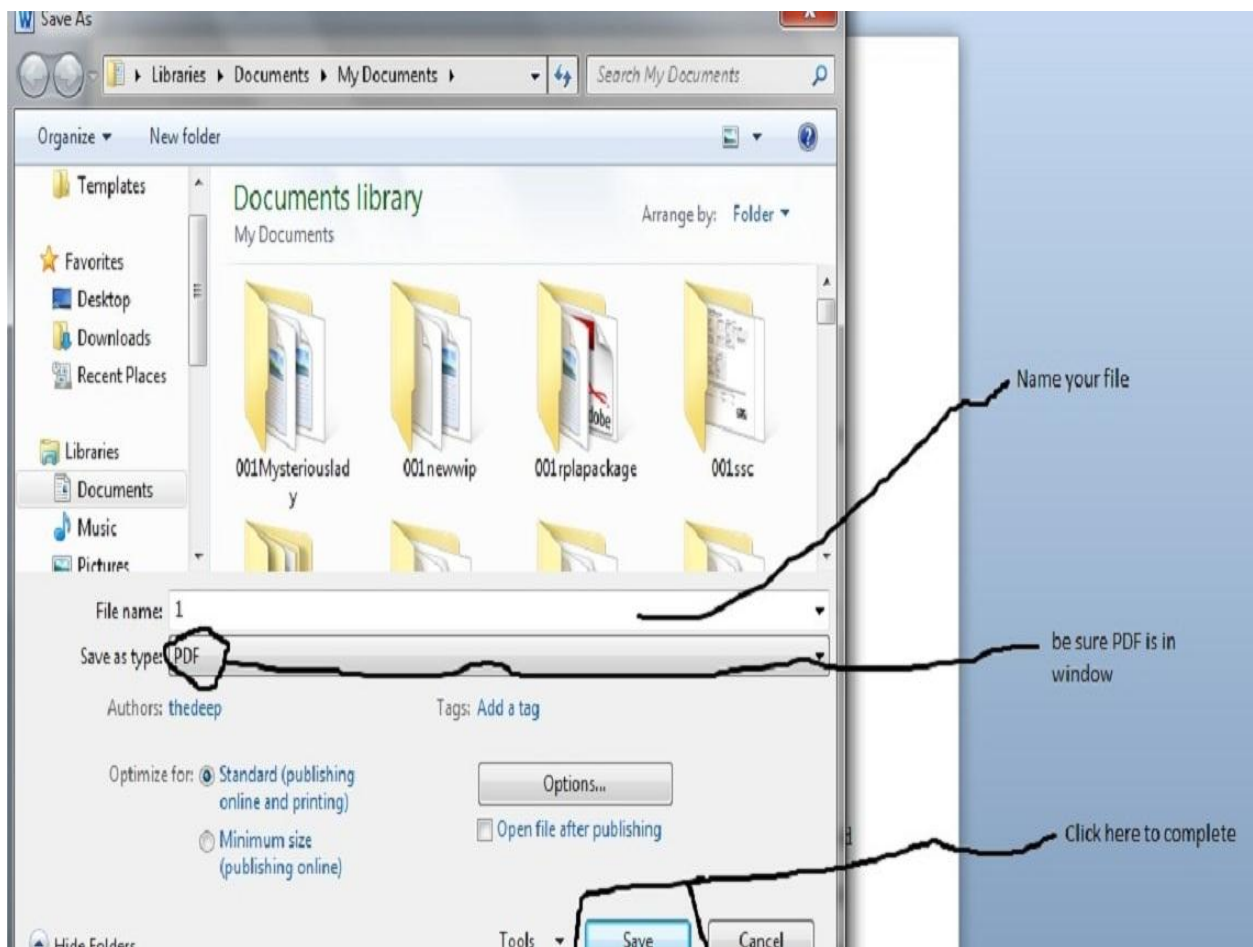
Size	65.8KB
Pages	59
Words	18510
Total Editing Time	9 Minutes
Title	Add a title
Tags	Add a tag
Comments	Add comments

Related Dates

Last Modified	1/19/2009 8:29 AM
Created	1/19/2009 8:29 AM
Last Printed	Never



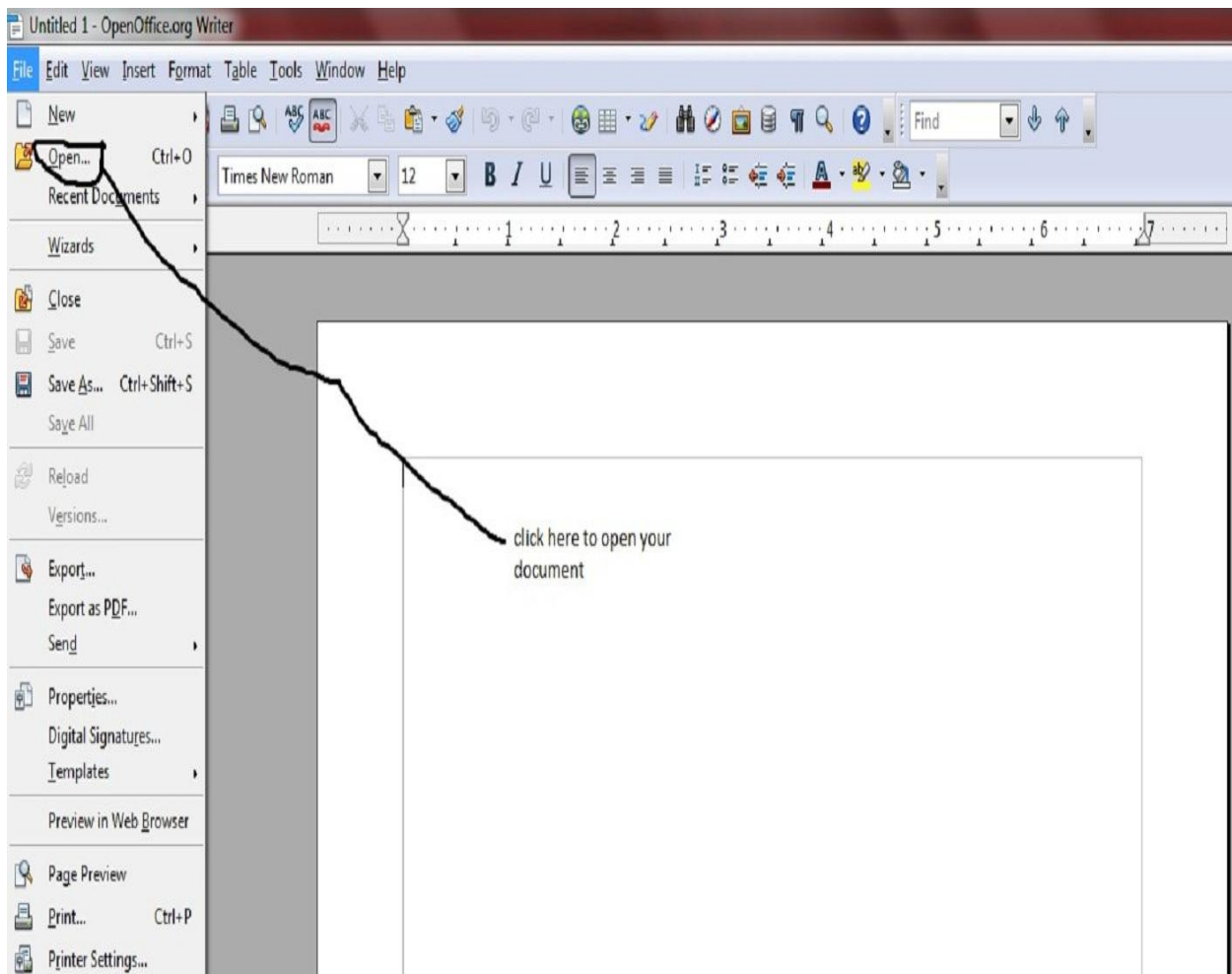


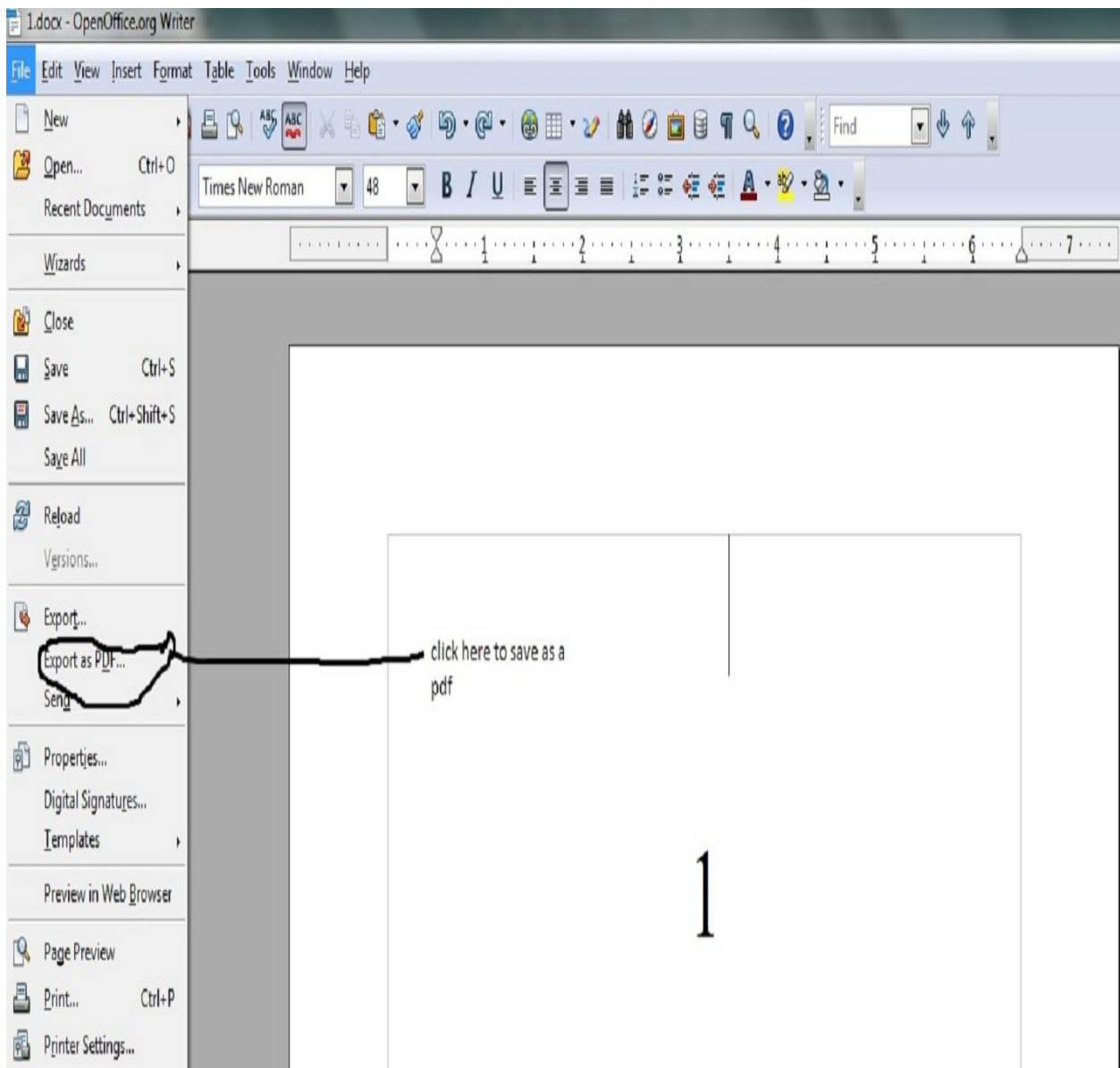


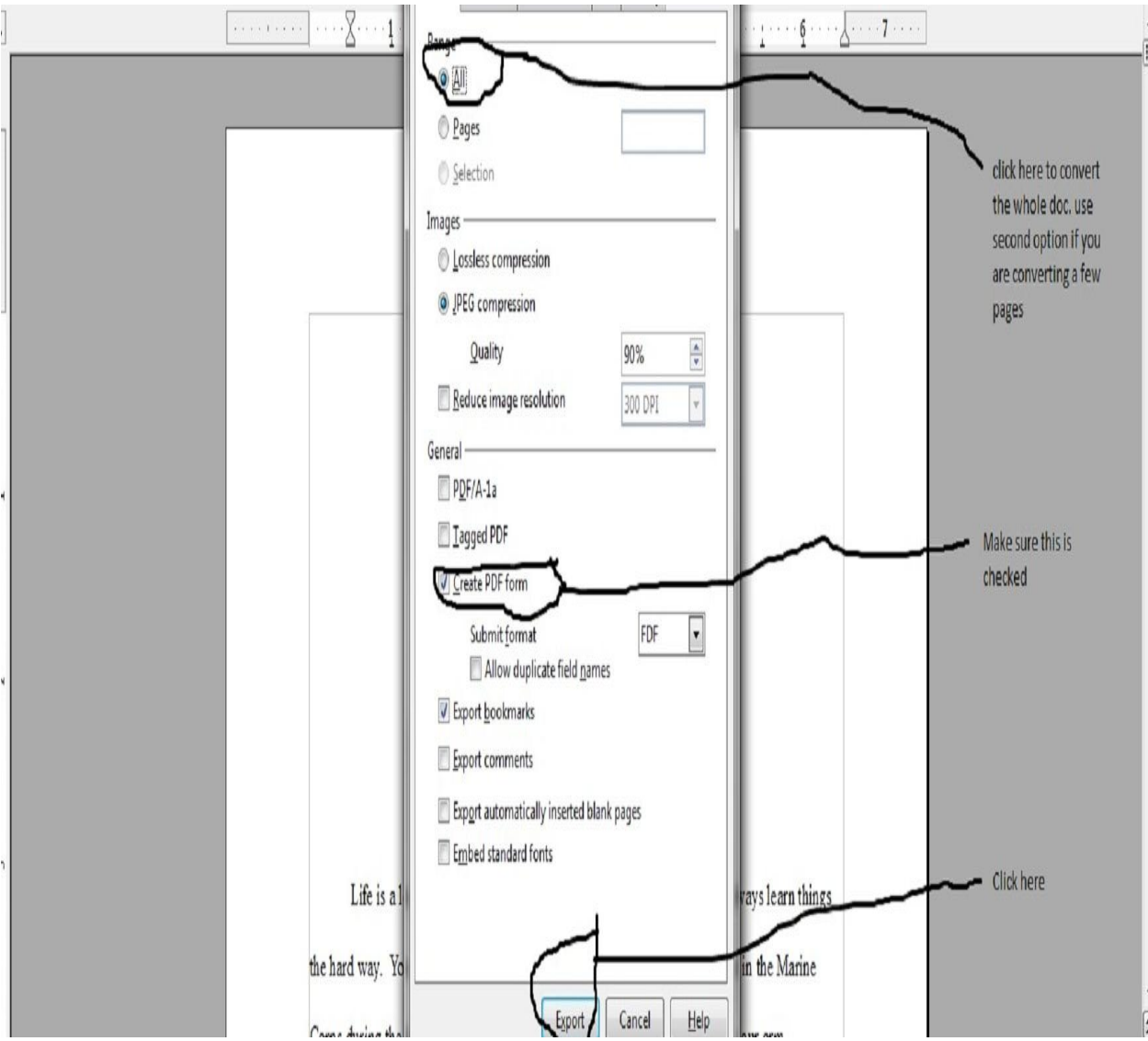
This method will save your work in a pdf format.

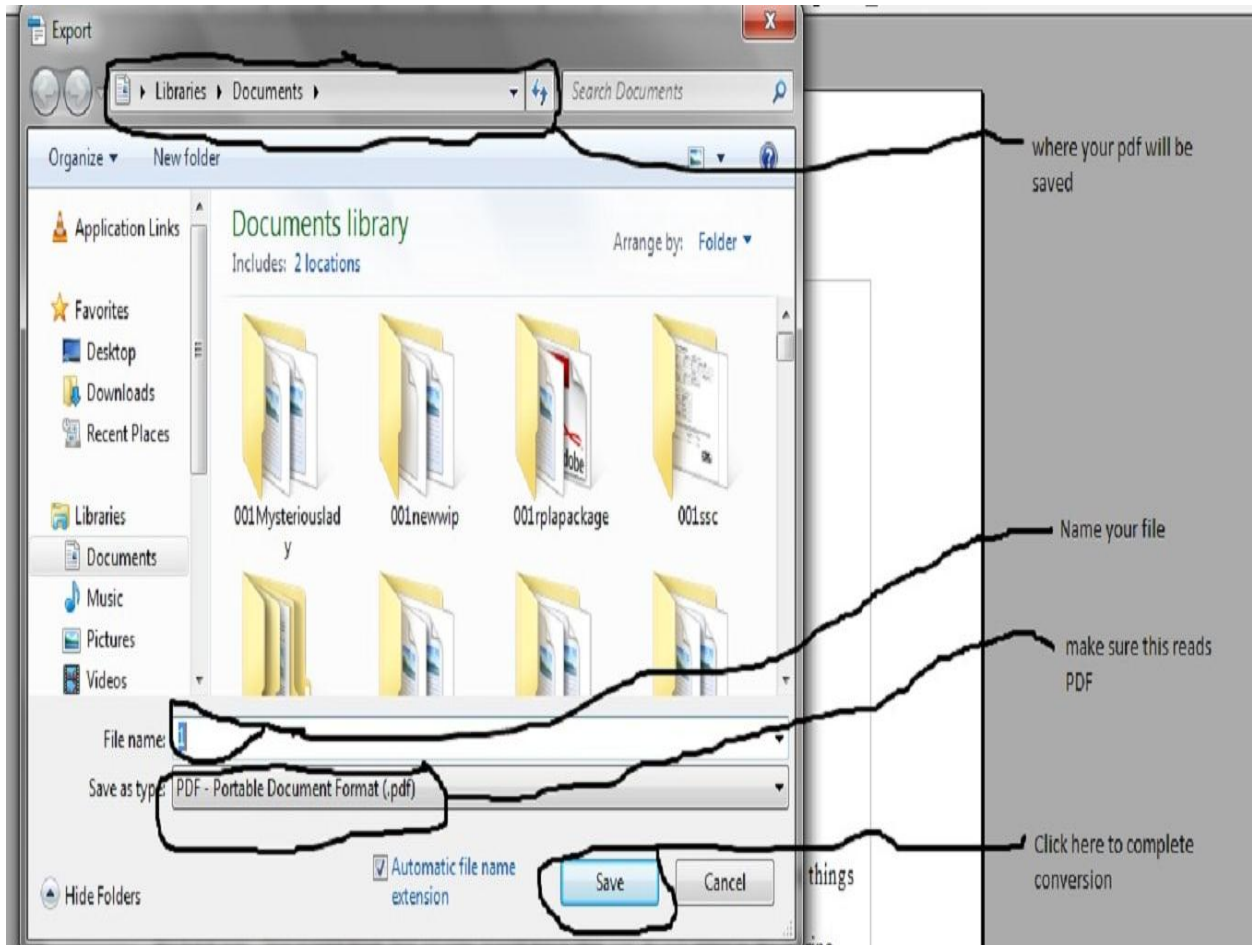
# Open Office

download it here for free <http://download.openoffice.org/>









**Just that simple----**



## INFORMATION PAGE

An Information Page must be emailed with each entry.  
*Please complete all requested information and send to [RPLAentries@floridawriters.net](mailto:RPLAentries@floridawriters.net)*

### ENTRY FEE

\_\_\_ I have paid online as of this date: \_\_\_\_\_  
\_\_\_ As of this date, \_\_\_\_\_, I have mailed my check # \_\_\_\_\_  
for the amount of \$ \_\_\_\_\_ To: \_\_\_\_\_

Chrissy Jackson, FWA President  
PO Box 66069 • St. Pete Beach, FL 33736

### CONTACT INFORMATION

Your Name \_\_\_\_\_  
Mailing Address \_\_\_\_\_  
Phone \_\_\_\_\_ Email \_\_\_\_\_

### ENTRY INFORMATION

Title of Entry \_\_\_\_\_  
Name(s) of Author(s)  
[1] \_\_\_\_\_  
FWA Member \_\_\_ Yes \_\_\_ No Member ID \_\_\_\_\_  
[2] \_\_\_\_\_  
FWA Member \_\_\_ Yes \_\_\_ No Member ID \_\_\_\_\_  
Pen Name/Names you want on award if a winner \_\_\_\_\_  
Word Count \_\_\_\_\_  
This work is \_\_\_ Published \_\_\_ Unpublished Date Published \_\_\_\_\_  
Please provide a link where your published work can be viewed \_\_\_\_\_

**Please choose a Genre by placing an "x" beside the entry**

## GENRE

### Book-Length Nonfiction

- Autobiography/Memoir
- Biography
- Educational/Informational
- History
- Humor/Satire
- Travel

### Short Nonfiction

- Creative Nonfiction
- Essay

### Short Fiction

- Flash Fiction
- Short Story

### Fiction for Children

- Children's
- Chapter Book
- Middle-Grade Fiction
- Young Adult

### Adult Book-Length Fiction

- Fantasy
- Historical
- Horror/Dark Fantasy
- Humor/Satire
- Inspirational Romance
- Mainstream/Literary
- Mystery
- Novella
- Romance
- Sci-Fi
- Thriller/Suspense
- Women's
- Plays

### Poetry

- Poetry

### General/Catch-All

- General